

## Non-Calculator

### Q1.

A shopkeeper uses this formula to work out the cost of bags of oranges.

$$C = 1.8n$$

$C$  is the cost in £

$n$  is the number of bags

- (a) Work out the cost of 7 bags.

---

---

---

---

Answer £ .....

(2)

- (b) There are four oranges in each bag.

Work out the average cost of an orange.

Give your answer in pence.

---

---

---

Answer \_\_\_\_\_ pence

(2)

(Total 4 marks)

**Q2.**

$y$  is inversely proportional to  $x$ .

When  $y = 2$ ,  $x = 5$

Work out an equation connecting  $y$  and  $x$ .

---

---

---

---

---

---

---

Answer \_\_\_\_\_

**(Total 3 marks)**

**Q3.**

$y$  is inversely proportional to the square of  $x$ .

When  $x = 3$ ,  $y = 8$

(a) Work out an equation connecting  $y$  and  $x$ .

---

---

---

---

Answer \_\_\_\_\_

**(3)**

(b) Work out the value of  $y$  when  $x = 12$   
Give your answer as a fraction in its simplest form.

---

---

---

Answer \_\_\_\_\_

**(2)**

**(Total 5 marks)**

## Calculator

**Q4.**

A stone is thrown upwards with a speed of  $v$  metres per second.

The stone reaches a maximum height of  $h$  metres.

$h$  is directly proportional to  $v^2$

When  $v = 10$ ,  $h = 5$

Work out the maximum height reached when  $v = 24$

---

---

---

---

---

---

---

Answer \_\_\_\_\_ m  
(Total 4 marks)

**Q5.**

The time of each swing of a pendulum, length  $l$  cm, is  $T$  seconds.

$T$  is directly proportional to the square root of  $l$ .

When  $l = 64$   $T = 1.6$

Work out the value of  $T$  when  $l = 132.25$

---

---

---

---

---

---

---

Answer \_\_\_\_\_ seconds  
(Total 5 marks)

**Q6.**

$w$  is directly proportional to  $y$

$w$  is inversely proportional to  $x^2$

(a) When  $y = 4$ ,  $w = 14$

Work out the value of  $w$  when  $y = 9$

---

---

---

---

Answer \_\_\_\_\_

(2)

(b) When  $x = 2$ ,  $w = 5$

Work out the value of  $w$  when  $x = 10$

---

---

---

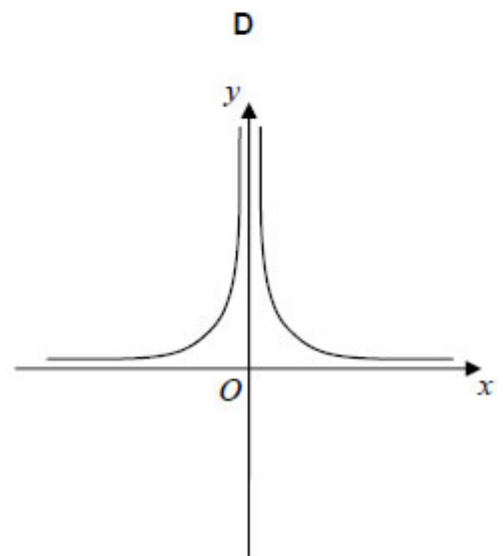
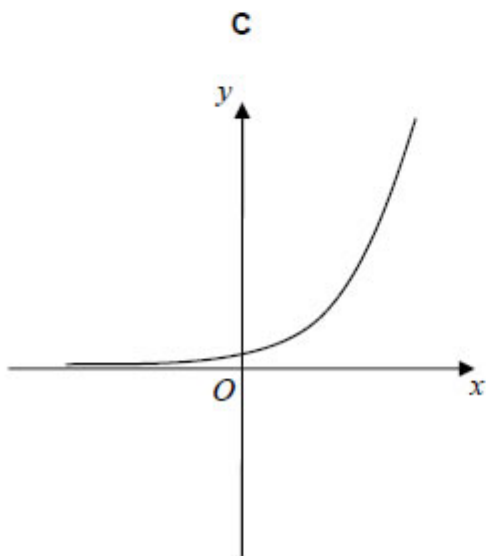
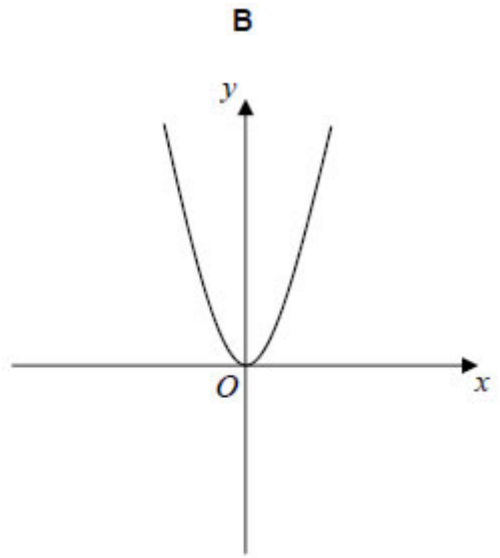
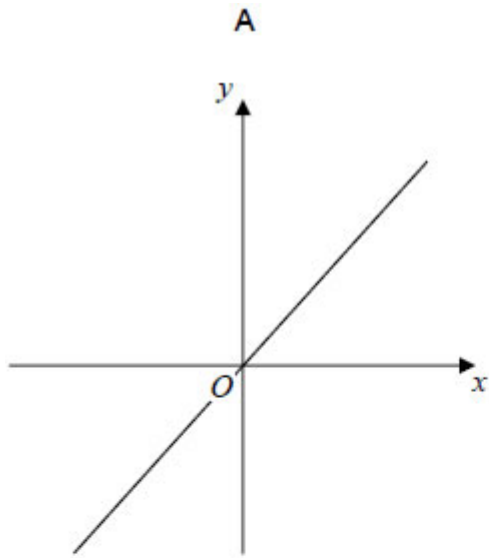
---

Answer \_\_\_\_\_

(3)

(c) Which graph shows the relationship between  $y$  and  $x$ ?

Circle the correct letter.



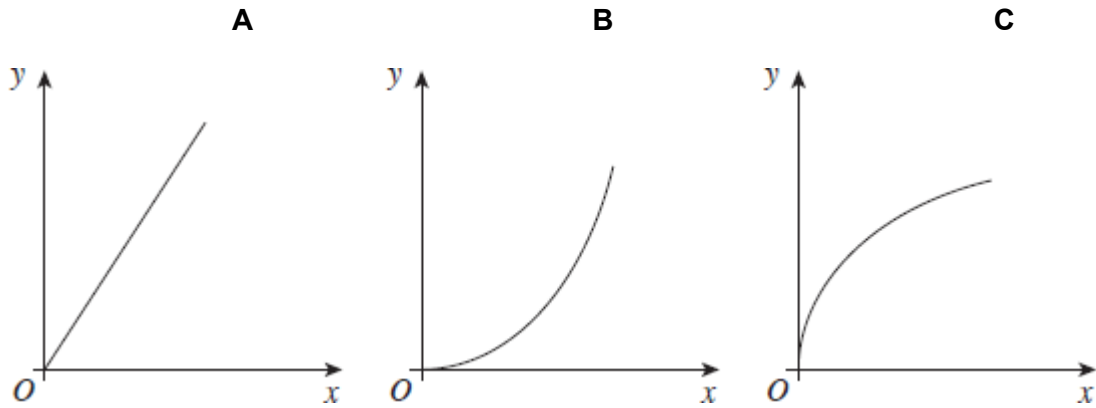
(1)  
(Total 6 marks)

**Q7.**

The fare, £ $y$ , for a journey is directly proportional to the square root of the distance,  $x$  miles.

- (a) Which sketch graph represents this information?

Circle the correct letter.



(1)

- (b) A 100 mile journey costs £36

What is the cost of a 250 mile journey?  
Give your answer to the nearest pound.

---

---

---

---

---

---

---

---

Answer £ \_\_\_\_\_

(4)

(Total 5 marks)

**Q8.**

$y$  is directly proportional to  $\sqrt{x}$

$x$	36	$a$
$y$	2	5

Work out the value of  $a$ .

---

---

---

---

---

---

---

---

---

---

Answer \_\_\_\_\_

**(Total 4 marks)**

**Q9.**

$y$  is inversely proportional to  $x^2$  where  $x > 0$

When  $x = 2$ ,  $y = 20$

(a) Form an equation for  $y$  in terms of  $x$ .

---

---

---

---

---

---

---

---

Answer \_\_\_\_\_

(3)

(b) Work out the value of  $x$  when  $y = 5$

---

---

---

---

---

---

---

---

Answer \_\_\_\_\_

(2)

(Total 5 marks)